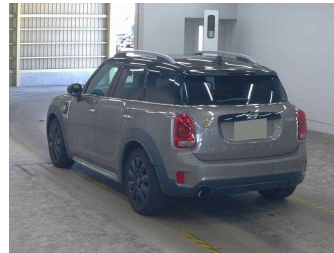


2017 Mini Countryman Cooper SE All4 Phev



Purchase Price

\$25,995

Includes GST
Excludes on-road costs of \$695

Body Style

5 door, Hatchback

Odometer

60,788 km

Engine

1500 cc, Plug-in Hybrid

Fuel Type

Electricity

Transmission

Automatic, Tiptronic, 4WD

Wheels

Factory Alloys

VIN

WMWYU720603E34032

Interior

Black, Leather

Safety



Reg No.

-

Ext Colour

Grey

History

-

Seats

5 seats, Leather

CO2 Emissions

★★★★☆

63 grams/km

Energy Economy

★★★★☆

**Annual fuel cost of \$1,630
2.8L per 100km**

Cost per year is an estimate based on petrol price of \$2.80 per litre and an average distance of 14000 km. Includes Road User Charges (RUC). Emissions and Energy Economy figures standardised to 3P WLTP.

Finance may be available on this vehicle. Ask one of our friendly staff for more information.



Gain peace of mind with Mechanical Breakdown Insurance. **Ask us how.**



Top features

- » Cruise Control
- » Reversing Camera



Scan this QR code for more info

Stock ID: 13861



Vision Autos | Phone 09 525 1780 | Email finance@visionautos.co.nz
89 Station Road, Penrose, Auckland 1061, New Zealand
www.visionautos.co.nz