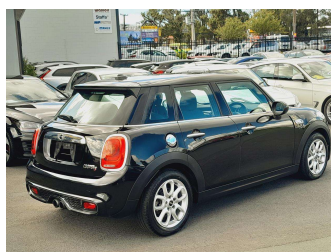


# 2015 Mini Cooper S Turbo - New Shape



**Purchase Price** **\$18,995**

Includes GST  
Excludes on-road costs of \$595

Finance may be available on this vehicle. Ask one of our friendly staff for more information.

Gain peace of mind with Mechanical Breakdown Insurance. **Ask us how.**

**Top features**

None Listed

Body Style  
**5 door, Hatchback**

Odometer  
**62,701 km**

Engine  
**2000 cc, In-line 4 cylinder**

Fuel Type  
**Petrol**

Transmission  
**Automatic, Tiptronic**

Wheels  
**Factory Alloys**

VIN  
**WMWXS720802C47334**

Interior  
**Charcoal, Cloth**

Safety  
  
Based on 2023 VSRR rating

Reg No.  
-

Ext Colour  
**Black**

History  
-

Seats  
**5 seats, Cloth**

CO2 Emissions  
**★★★★☆**  
**162 grams/km**

Energy Economy  
**★★★☆☆**  
**Annual fuel cost of \$2,700**  
**6.9L per 100km**

Cost per year is an estimate based on petrol price of \$2.80 per litre and an average distance of 14000 km. Emissions and Energy Economy figures standardised to 3P WLTP.

**Stock ID: 12640**