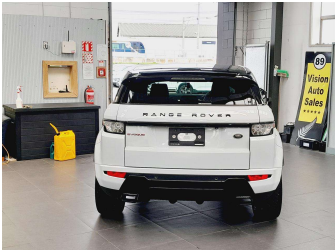


# 2015 Land Rover Range Rover Evoque HSE Dynamic



## Purchase Price

Includes GST  
Excludes on-road costs of \$595

**\$31,995**

Finance may be available on this vehicle. Ask one of our friendly staff for more information.



Gain peace of mind with Mechanical Breakdown Insurance. **Ask us how.**



## Top features

None Listed

### Body Style

**5 door, SUV / 4x4**

### Odometer

**75,550 km**

### Engine

**2000 cc, In-line 4 cylinder**

### Fuel Type

**Petrol**

### Transmission

**Automatic, Tiptronic, 4WD**

### Wheels

**Factory Alloys**

### VIN

**SALVA2AG9FH064924**

### Interior

**Black, Leather**

### Safety



Based on 2024 VSRR rating

### Reg No.

-

### Ext Colour

**Pearl Two Tone**

### History

-

### Seats

**5 seats, Leather**

### CO2 Emissions

★★★★☆

**201 grams/km**

### Energy Economy

★★★★☆

**Annual fuel cost not available**

Cost per year is an estimate based on petrol price of \$2.80 per litre and an average distance of 14000 km. Emissions and Energy Economy figures standardised to 3P WLTP.



Scan this QR code for more info  
Stock ID: 13636



Vision Autos | Phone 09 525 1780 | Email [finance@visionautos.co.nz](mailto:finance@visionautos.co.nz)  
89 Station Road, Penrose, Auckland 1061, New Zealand  
[www.visionautos.co.nz](http://www.visionautos.co.nz)