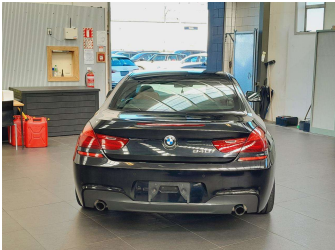


# 2015 BMW 640i Coupe M Sport



### Purchase Price

**\$23,495**

Includes GST  
Excludes on-road costs of \$595

Finance may be available on this vehicle. Ask one of our friendly staff for more information.



Gain peace of mind with Mechanical Breakdown Insurance. **Ask us how.**



### Top features

- » Reversing Camera
- » Sunroof

#### Body Style

**2 door, Coupe**

#### Odometer

**77,890 km**

#### Engine

**3000 cc, In-line 6 cylinder**

#### Fuel Type

**Petrol**

#### Transmission

**Automatic, Tiptronic**

#### Wheels

**Factory Alloys**

#### VIN

**WBALW32090DW91951**

#### Interior

**Brun, Leather**

#### Safety



Based on 2024 VSRR rating

#### Reg No.

-

#### Ext Colour

**Black**

#### History

-

#### Seats

**4 seats, Leather**

#### CO2 Emissions

★★★★☆

**209 grams/km**

#### Energy Economy

★★☆☆☆

**Annual fuel cost of \$3,530  
9L per 100km**

Cost per year is an estimate based on petrol price of \$2.80 per litre and an average distance of 14000 km. Emissions and Energy Economy figures standardised to 3P WLTP.



Scan this QR code for more info  
**Stock ID: 13440**



Vision Autos | Phone 09 525 1780 | Email [finance@visionautos.co.nz](mailto:finance@visionautos.co.nz)  
89 Station Road, Penrose, Auckland 1061, New Zealand  
[www.visionautos.co.nz](http://www.visionautos.co.nz)