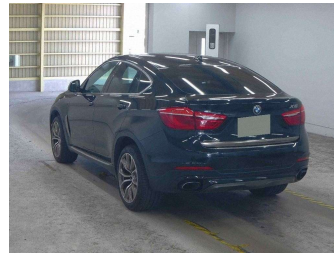
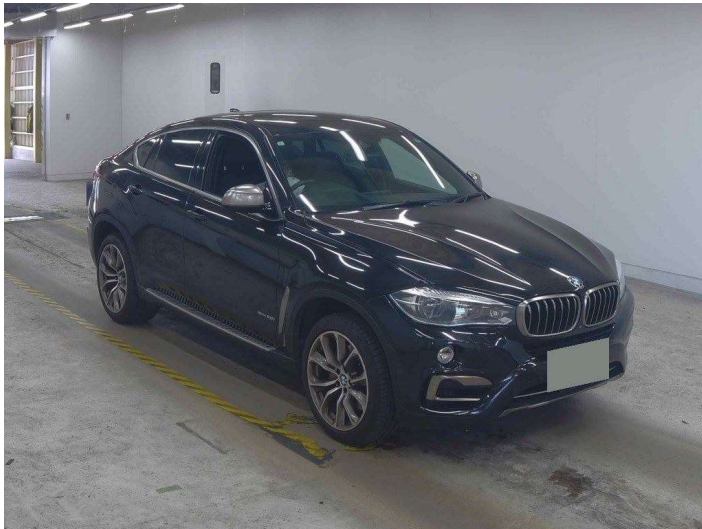


2015 BMW X6 xDrive 50i 4wd



Purchase Price

\$41,995

Includes GST
Excludes on-road costs of \$695

Body Style

5 door, SUV / 4x4

Odometer

45,696 km

Engine

4400 cc, V8

Fuel Type

Petrol

Transmission

Automatic, Tiptronic, 4WD

Wheels

Factory Alloys

VIN

WBAKU620400G72186

Interior

Black, Leather

Safety



Reg No.

-

Ext Colour

Black

History

-

Seats

5 seats, Leather

CO2 Emissions

★ ★ ☆ ☆ ☆ ☆

251 grams/km

Energy Economy

★ ☆ ☆ ☆ ☆ ☆

**Annual fuel cost of \$4,230
10.8L per 100km**

Cost per year is an estimate based on petrol price of \$2.80 per litre and an average distance of 14000 km. Emissions and Energy Economy figures standardised to 3P WLTP.

Finance may be available on this vehicle. Ask one of our friendly staff for more information.



Gain peace of mind with Mechanical Breakdown Insurance. **Ask us how.**



Top features

- » Cruise Control
- » Reversing Camera
- » sun roof



Scan this QR code for more info

Stock ID: 13871



Vision Autos | Phone 09 525 1780 | Email finance@visionautos.co.nz
89 Station Road, Penrose, Auckland 1061, New Zealand
www.visionautos.co.nz