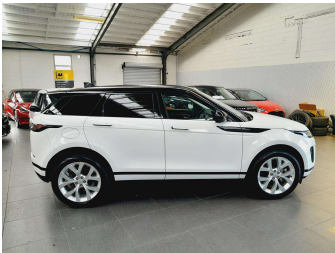


2020 Land Rover Range Rover Evoque P200 SI4 New



Purchase Price

Includes GST
Excludes on-road costs of \$595

\$49,995

Finance may be available on this vehicle. Ask one of our friendly staff for more information.



Gain peace of mind with Mechanical Breakdown Insurance. **Ask us how.**



Top features

- » Cruise Control
- » paddle shift

Body Style

5 door, SUV / 4x4

Odometer

34,390 km

Engine

2000 cc, In-line 4 cylinder

Fuel Type

Petrol

Transmission

Automatic, Tiptronic, 4WD

Wheels

Factory Alloys

VIN

SALZA2AX8LH097331

Interior

Black, Leather

Safety



Based on 2024 UCSR rating for 11-18 models

Reg No.

-

Ext Colour

White

History

-

Seats

5 seats, Leather

CO2 Emissions

★ ★ ☆ ☆ ☆ ☆

261 grams/km

Energy Economy

★ ☆ ☆ ☆ ☆ ☆

**Annual fuel cost of \$4,390
11.2L per 100km**

Cost per year is an estimate based on petrol price of \$2.80 per litre and an average distance of 14000 km. Emissions and Energy Economy figures standardised to 3P WLTP.



Scan this QR code for more info
Stock ID: 13668



Vision Autos | Phone 09 525 1780 | Email finance@visionautos.co.nz
89 Station Road, Penrose, Auckland 1061, New Zealand
www.visionautos.co.nz