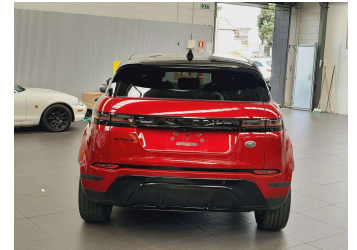


# 2019 Land Rover Range Rover Evoque P200 SI4 New



**Purchase Price** **\$44,995**

Includes GST  
Excludes on-road costs of \$695

Finance may be available on this vehicle. Ask one of our friendly staff for more information.

Gain peace of mind with Mechanical Breakdown Insurance. **Ask us how.**

**Top features**

None Listed

**Body Style**  
5 door, SUV / 4x4

**Odometer**  
45,500 km

**Engine**  
2000 cc, In-line 4 cylinder

**Fuel Type**  
Petrol

**Transmission**  
Automatic, Tiptronic, 4WD

**Wheels**  
20", Factory Alloys

**VIN**  
SALZA2AX4LH006765

**Interior**  
Black, Leather

**Safety**



Based on 2025 UCSR rating for 11-18 models

**Reg No.**  
-

**Ext Colour**  
Red

**History**  
-

**Seats**  
5 seats, Leather

**CO2 Emissions**  
★ ★ ☆ ☆ ☆ ☆  
**261 grams/km**

**Energy Economy**  
★ ☆ ☆ ☆ ☆ ☆  
**Annual fuel cost of \$4,390**  
**11.2L per 100km**

Cost per year is an estimate based on petrol price of \$2.80 per litre and an average distance of 14000 km. Emissions and Energy Economy figures standardised to 3P WLTP.



Scan this QR code for more info  
Stock ID: 14137



Vision Autos | Phone 09 525 1780 | Email [finance@visionautos.co.nz](mailto:finance@visionautos.co.nz)  
89 Station Road, Penrose, Auckland 1061, New Zealand  
[www.visionautos.co.nz](http://www.visionautos.co.nz)