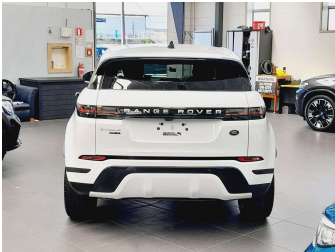


# 2019 Land Rover Range Rover Evoque S P200



### Purchase Price

Includes GST  
Excludes on-road costs of \$595

**\$47,995**

Finance may be available on this vehicle. Ask one of our friendly staff for more information.



Gain peace of mind with Mechanical Breakdown Insurance. **Ask us how.**



### Top features

» Reversing Camera

### Body Style

**5 door, SUV / 4x4**

### Odometer

**37,980 km**

### Engine

**2000 cc, In-line 4 cylinder**

### Fuel Type

**Petrol**

### Transmission

**Automatic, Tiptronic, 4WD**

### Wheels

**Factory Alloys**

### VIN

**SALZA2AXXLH037373**

### Interior

**Black, Leather**

### Safety



Based on 2024 UCSR rating for 11-18 models

### Reg No.

-

### Ext Colour

**White**

### History

-

### Seats

**5 seats, Leather**

### CO2 Emissions

★ ★ ☆ ☆ ☆ ☆

**261 grams/km**

### Energy Economy

★ ☆ ☆ ☆ ☆ ☆

**Annual fuel cost of \$4,390  
11.2L per 100km**

Cost per year is an estimate based on petrol price of \$2.80 per litre and an average distance of 14000 km. Emissions and Energy Economy figures standardised to 3P WLTP.

**Stock ID: 13332**



Vision Autos | Phone 09 525 1780 | Email [sales@visionautos.co.nz](mailto:sales@visionautos.co.nz)  
89 Station Road, Penrose, Auckland 1061, New Zealand  
[www.visionautos.co.nz](http://www.visionautos.co.nz)