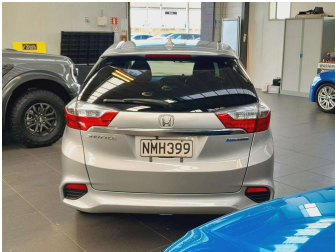


2015 Honda Shuttle HYBRID X Edition



Purchase Price

Includes GST, Registration & Licensing

\$9,995

Finance may be available on this vehicle. Ask one of our friendly staff for more information.



Gain peace of mind with Mechanical Breakdown Insurance. **Ask us how.**



Top features

None Listed

Body Style

Station Wagon

Odometer

117,680 km

Engine

1490 cc, Hybrid

Fuel Type

Hybrid

Transmission

Automatic, Tiptronic

Wheels

-

VIN

7AT08G1XX21008106

Interior

Black, Cloth

Safety



Based on 2024 VSRR rating

Reg No.

NMH399

Ext Colour

Silver

History

Ex-Overseas, 1 owner

Seats

5 seats, Cloth

CO2 Emissions

★★★★☆

91 grams/km

Energy Economy

★★★★☆☆

Annual fuel cost of \$1,490

3.8L per 100km

Cost per year is an estimate based on petrol price of \$2.80 per litre and an average distance of 14000 km. Emissions and Energy Economy figures standardised to 3P WLTP.

Stock ID: 13754



Vision Autos | Phone 09 525 1780 | Email sales@visionautos.co.nz
89 Station Road, Penrose, Auckland 1061, New Zealand
www.visionautos.co.nz