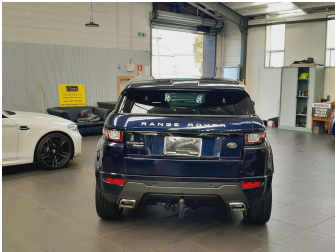


2016 Land Rover Range Rover Evoque HSE Dynamic



Purchase Price

Includes GST
Excludes on-road costs of \$595

\$38,995

Finance may be available on this vehicle. Ask one of our friendly staff for more information.



Gain peace of mind with Mechanical Breakdown Insurance. **Ask us how.**



Top features

- » Cruise Control
- » Heated Seats

Body Style

5 door, SUV / 4x4

Odometer

40,220 km

Engine

2000 cc, In-line 4 cylinder

Fuel Type

Petrol

Transmission

Automatic, Tiptronic, 4WD

Wheels

20", Factory Alloys

VIN

SALVA2AG5GH086954

Interior

Black/Ivory, Leather

Safety



Based on 2024 UCSR rating for 11-18 models

Reg No.

-

Ext Colour

Blue

History

-

Seats

5 seats, Leather

CO2 Emissions

★★★★☆

201 grams/km

Energy Economy

★★☆☆☆☆

Annual fuel cost not available

Cost per year is an estimate based on petrol price of \$2.80 per litre and an average distance of 14000 km. Emissions and Energy Economy figures standardised to 3P WLTP.

Stock ID: 13632



Vision Autos | Phone 09 525 1780 | Email sales@visionautos.co.nz
89 Station Road, Penrose, Auckland 1061, New Zealand
www.visionautos.co.nz