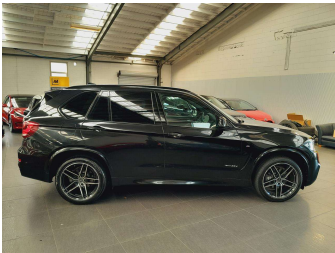


# 2016 BMW X5 xDrive 35d M-Sport



## Purchase Price

Includes GST, Registration & Licensing

**\$32,495**

Finance may be available on this vehicle. Ask one of our friendly staff for more information.



Gain peace of mind with Mechanical Breakdown Insurance. **Ask us how.**



## Top features

None Listed

### Body Style

**SUV / 4x4**

### Odometer

**124,860 km**

### Engine

**2990 cc, In-line 6 cylinder**

### Fuel Type

**Diesel**

### Transmission

**Automatic, Tiptronic, 4WD**

### Wheels

**20", alloy wheels**

### VIN

**WBAKS420400J64775**

### Interior

**Braun, Leather**

### Safety



Based on 2024 UCSR rating for 13-17 models

### Reg No.

**RHZ195**

### Ext Colour

**Black**

### History

**Ex-Overseas, 1 owner**

### Seats

**5 seats, Leather**

### CO2 Emissions

★★★★☆☆

**207 grams/km**

### Energy Economy

★★★★☆☆

**Annual fuel cost of \$3,280  
7.9L per 100km**

Cost per year is an estimate based on diesel price of \$2.00 per litre and an average distance of 14000 km. Includes Road User Charges (RUC). Emissions and Energy Economy figures standardised to 3P WLTP.



Scan this QR code for more info  
**Stock ID: 13902**



Vision Autos | Phone 09 525 1780 | Email [finance@visionautos.co.nz](mailto:finance@visionautos.co.nz)  
89 Station Road, Penrose, Auckland 1061, New Zealand  
[www.visionautos.co.nz](http://www.visionautos.co.nz)